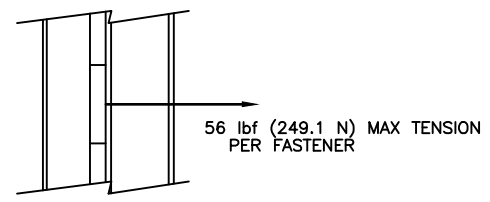
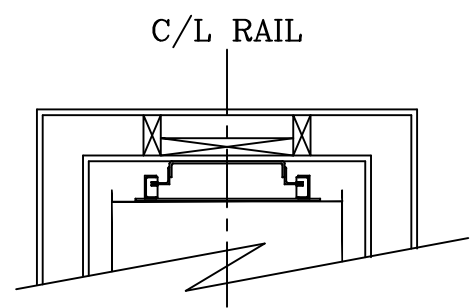


MINIMUM RAIL BACKING DETAIL

(1) 2"x12"
RAIL SUPPORT ENTIRE HEIGHT
OF HOISTWAY.



NOTE:
ALL DIMENSIONS ARE IN INCHES.
DIMENSIONS IN [] ARE MM.

- NOTES:**
1. FASTENERS BY OTHERS.
 2. FILL ALL ANCHOR POINTS.
 3. THIS DRAWING DEPICTS SAMPLE CONSTRUCTION ONLY.
 4. IT IS THE RESPONSIBILITY OF THE INSTALLER/CONTRACTOR OR ENGINEER TO DESIGN AND SPECIFY STRUCTURAL SUPPORTS.
 5. ALL CONSTRUCTION TO BE IN COMPLIANCE WITH LOCAL CODES.
 6. MAXIMUM IMPACT LOAD ON PIT FLOOR IS 1.09 Psi (7,515 Pa)

RAIL LENGTH:
1) STANDARD
LOADING HEIGHT + TRAVEL + CAR HEIGHT + 16"

2) LOW OVERHEAD W/ ROLL-UP GATE(S)
LOADING HEIGHT + TRAVEL + CAR HEIGHT + 7"

*RAIL BRACKET IS BEHIND POWERHEAD

FOX VALLEY		1726 North Ballard Road Appleton, WI 54911 Phone: 800-238-8739	
ELEVATOR™			
ELEVATOR CONTRACTOR:			
JOB NAME:		ORDER NUMBER:	
CABLE-WAITER SERIES RAIL ATTACHMENT LAYOUT & PULLOUT FORCES			
DRAWN BY:	DATE:	SIGNATURE OF APPROVAL	DWG. NO. C-001165