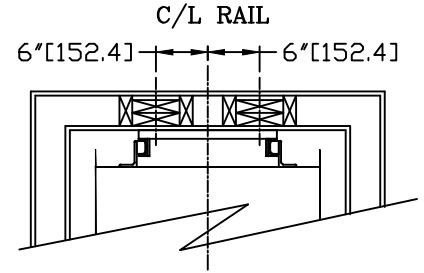
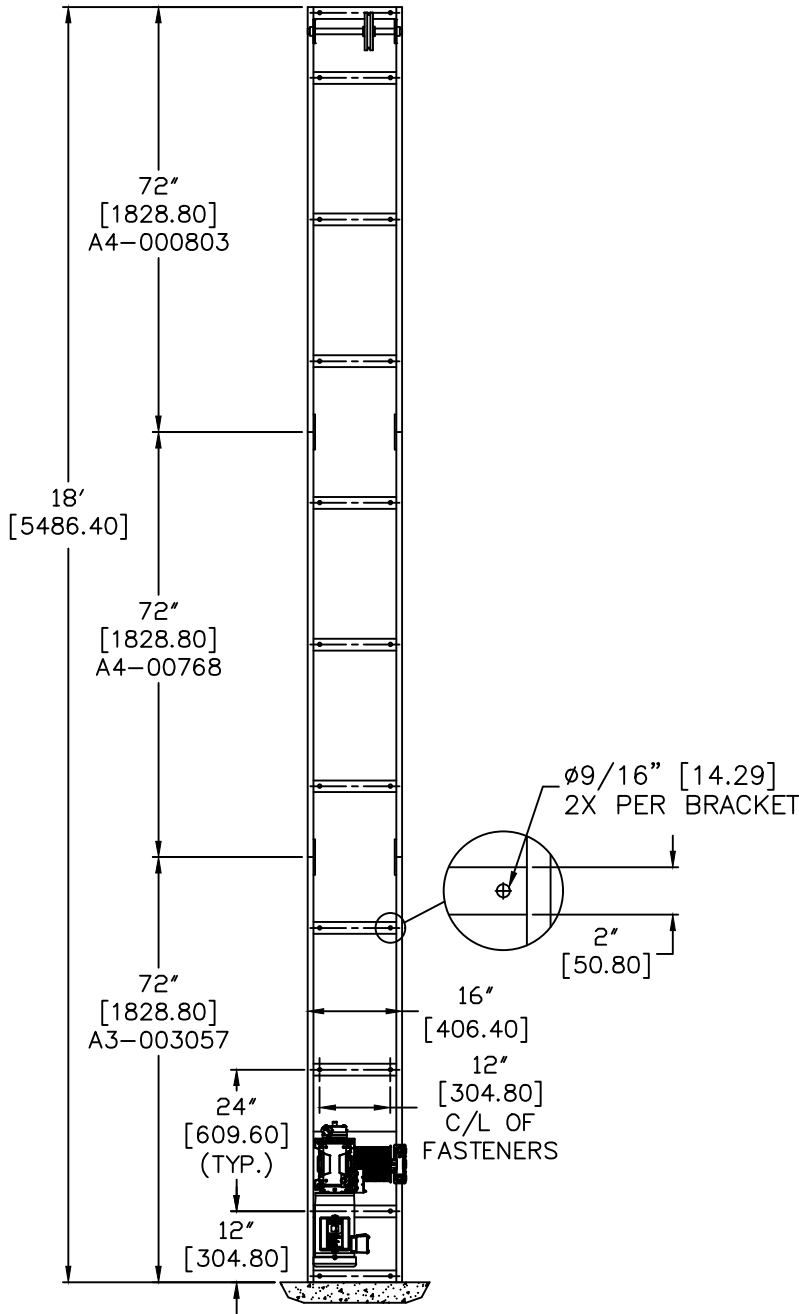
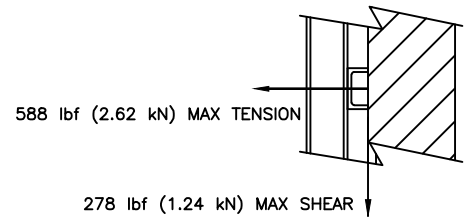


MINIMUM RAIL BACKING DETAIL

(4) 2"x6"
RAIL SUPPORT ENTIRE HEIGHT
OF HOISTWAY.



SIDE VIEW OF RAIL BRACKET



NOTE:
ALL DIMENSIONS ARE IN INCHES.
DIMENSIONS IN [] ARE MM.

NOTES:

1. FASTENERS BY OTHERS.
2. FILL ALL ANCHOR POINTS.
3. THIS DRAWING DEPICTS SAMPLE CONSTRUCTION ONLY.
4. IT IS THE RESPONSIBILITY OF THE INSTALLER/CONTRACTOR OR ENGINEER TO DESIGN AND SPECIFY STRUCTURAL SUPPORTS.
5. ALL CONSTRUCTION TO BE IN COMPLIANCE WITH LOCAL CODES.
6. ALL REACTIONS SHOWN ABOVE ARE STATIC LOADS.
7. MAXIMUM RAIL BRACKET TENSION/SHEAR MOVES UP AND DOWN SUPPORT WALL AT 50 FEET PER MINUTE.
8. GUIDE RAIL SUPPORT WALL CANNOT EXCEED 1/8" OF TOTAL DEFLECTION AT POINT OF SUPPORT. (PER ASME A17.1 2.23.5.2)
9. RAIL MOUNTED BUFFER SPRINGS ARE OPTIONAL.

<i>Impact Load Per Spring (Per ASME A17.1 8.2.3.2)</i>	
1/2 Weight of Dead and Live Load	326.5 lbs
Maximum Stroke of Buffer Spring	1.75 in
	0.146 ft
Impact/Spring	728 lbs
Total Impact (2 Springs)	1457 lbs

RAIL LENGTH:

1) STANDARD
LOADING HEIGHT + TRAVEL + CAR HEIGHT + 22"

2) LOW OVERHEAD W/ ROLL-UP GATE(S)
LOADING HEIGHT + TRAVEL + CAR HEIGHT + 17"

FOX VALLEY ELEVATOR 1726 North Ballard Road
Appleton, WI 54911
Phone: 800-238-8739

ELEVATOR CONTRACTOR:			
JOB NAME:		ORDER NUMBER:	
PACA-WAITER (011) RAIL ATTACHMENT LAYOUT & PULLOUT FORCES			
DRAWN BY:	DATE:	SIGNATURE OF APPROVAL	DWG. NO. C-001173