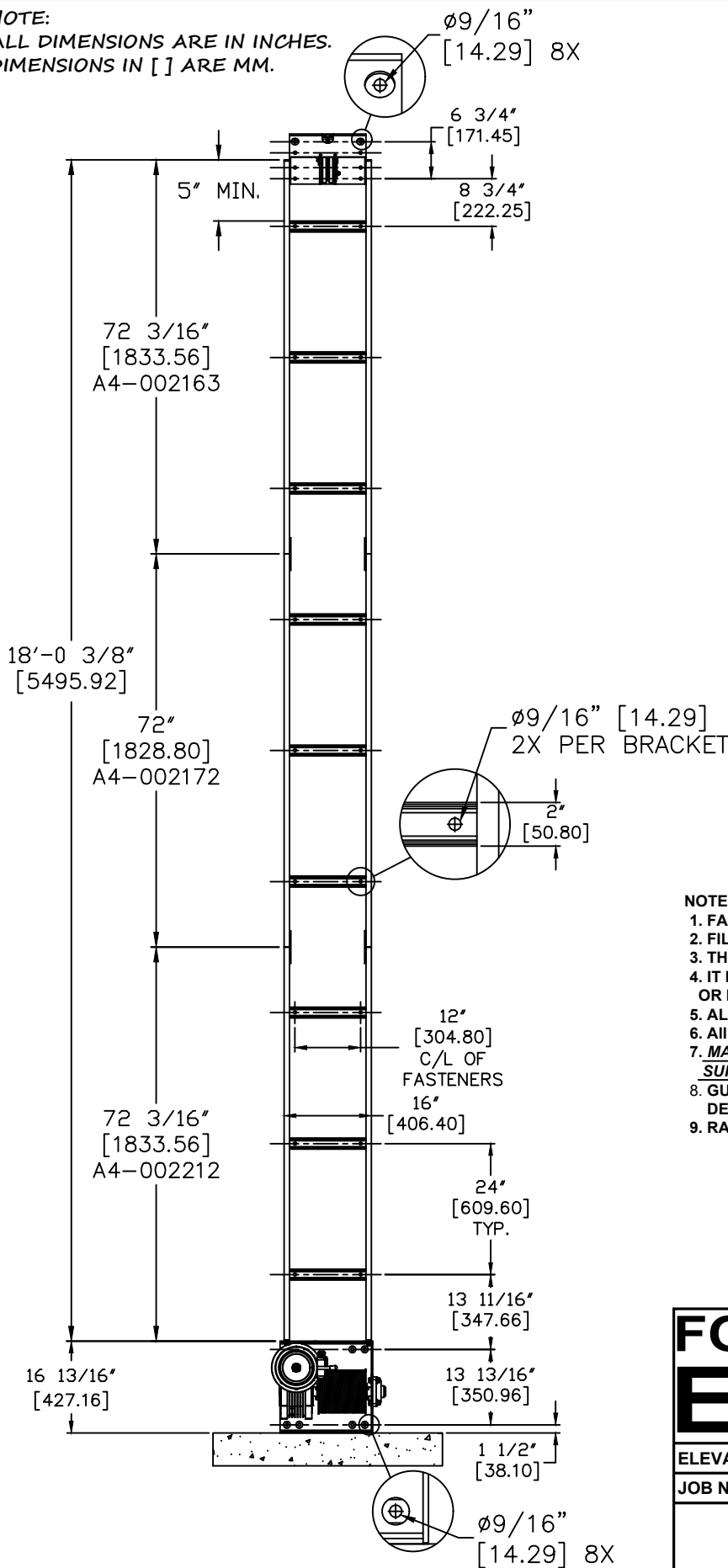


NOTE:  
ALL DIMENSIONS ARE IN INCHES.  
DIMENSIONS IN [ ] ARE MM.

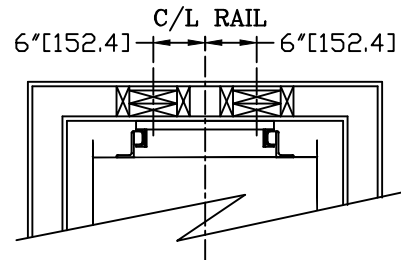


RAIL LENGTH:  
LOADING HEIGHT + TRAVEL + CAR HEIGHT + 3 1/4"

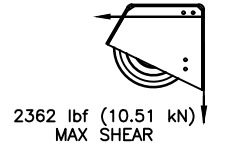
**MINIMUM RAIL BACKING DETAIL**

REV: E

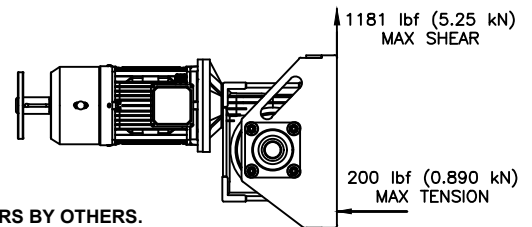
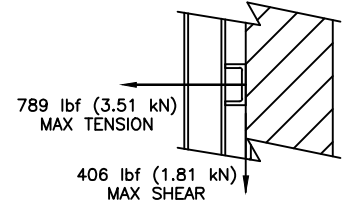
(4) 2"x6"  
RAIL SUPPORT ENTIRE HEIGHT  
OF HOISTWAY.



SIDE VIEW OF TOP SHEAVE  
1903 lbf (8.47 kN) MAX TENSION



SIDE VIEW OF RAIL BRACKET



- NOTES:
1. FASTENERS BY OTHERS.
  2. FILL ALL ANCHOR POINTS.
  3. THIS DRAWING DEPICTS SAMPLE CONSTRUCTION ONLY.
  4. IT IS THE RESPONSIBILITY OF THE INSTALLER/CONTRACTOR OR ENGINEER TO DESIGN AND SPECIFY STRUCTURAL SUPPORTS.
  5. ALL CONSTRUCTION TO BE IN COMPLIANCE WITH LOCAL CODES.
  6. ALL REACTIONS SHOWN ABOVE ARE STATIC LOADS.
  7. MAXIMUM RAIL BRACKET TENSION/SHEAR MOVES UP AND DOWN SUPPORT WALL AT 60 FEET PER MINUTE.
  8. GUIDE RAIL SUPPORT WALL CANNOT EXCEED 1/8" OF TOTAL DEFLECTION AT POINT OF SUPPORT. (PER ASME A17.1 2.23.5.2)
  9. RAIL MOUNTED BUFFER SPRINGS ARE OPTIONAL.

Impact Load Per Spring (Per ASME A17.1 8.2.3.2)	
1/2 Weight of Dead and Live Load	590.5 lbs
Maximum Stroke of Buffer Spring	1.675 in
	0.140 ft
Impact/Spring	1386 lbs
Total Impact (2 Springs)	2773 lbs

**FOX VALLEY ELEVATOR** <sup>TM</sup>

1726 North Balliard Road  
Appleton, WI 54911  
Phone: 800-238-8739

ELEVATOR CONTRACTOR: \_\_\_\_\_

JOB NAME: \_\_\_\_\_ ORDER NUMBER: \_\_\_\_\_

**PACA-WAITER SERIES  
RAIL LAYOUT & PULL OUT FORCES**

DRAWN BY: _____	DATE: _____	SIGNATURE OF APPROVAL _____	DWG. NO. C-003011
-----------------	-------------	-----------------------------	----------------------