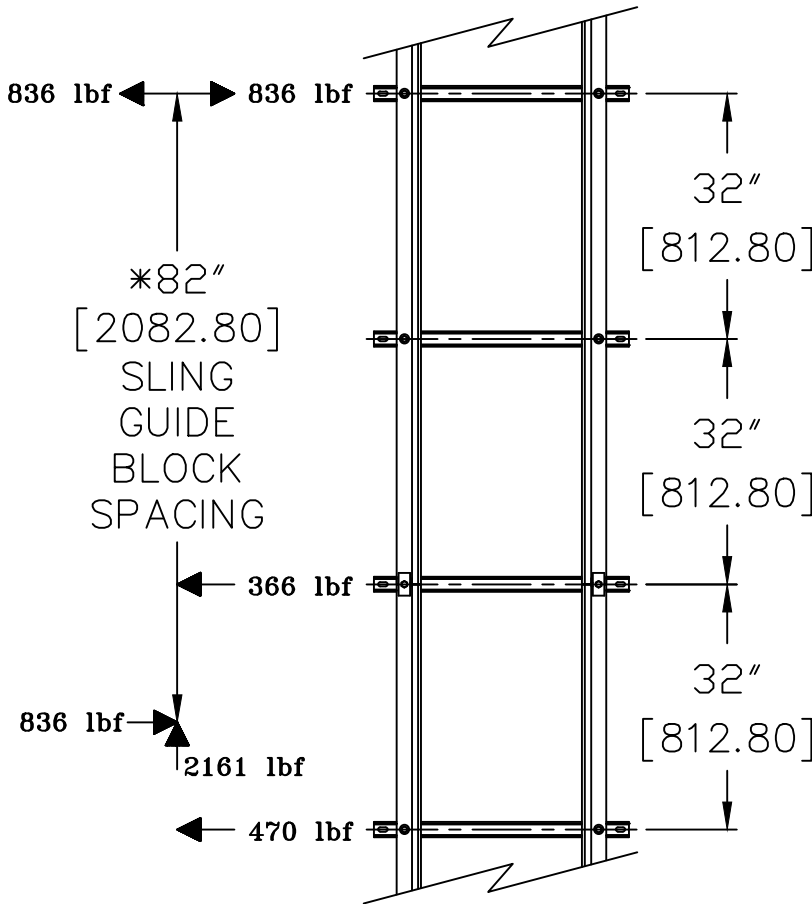


MAXIMUM LIVE (STATIC) LOAD = 1000 lbf
MAXIMUM DEAD (STATIC) LOAD = 1161 lbf (SEE NOTE #3)
MAXIMUM TOTAL (STATIC) LOAD = 2161 lbf
MAXIMUM SHEAR (STATIC) PER BRACKET = 534 lbf (267 lbf PER FASTENER)
MAXIMUM TENSION (STATIC) PER BRACKET = 836 lbf (418 lbf PER FASTENER)

SIDE VIEW OF RAIL BRACKET

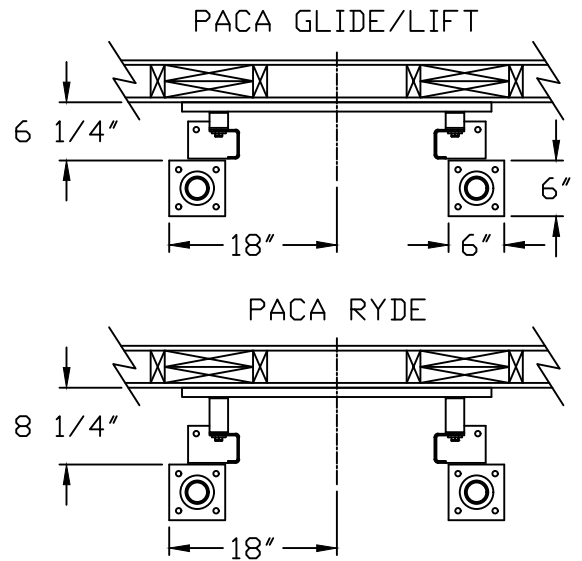
836 lbf (3.72 kN)
MAX TENSION

540 lbf (2.41 kN)
MAX SHEAR



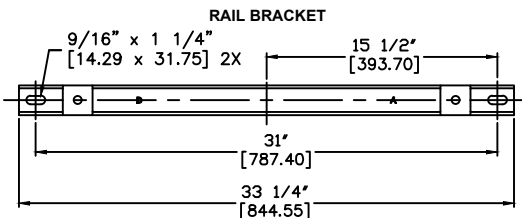
- NOTES:**
1. FASTENERS BY OTHERS.
 2. FILL ALL ANCHOR POINTS.
 3. DEAD LOAD OF ELEVATOR INCLUDES SLING, CAB, FLOORING GATE(S), ETC. AND ALL PERMANENT FIXTURES.
 4. IT IS THE RESPONSIBILITY OF THE INSTALLER/CONTRACTOR OR ENGINEER TO DESIGN AND SPECIFY STRUCTURAL SUPPORTS.
 5. ALL CONSTRUCTION TO BE IN COMPLIANCE WITH LOCAL CODES.
 6. MAXIMUM RAIL BRACKET TENSION/SHEAR MOVES UP AND DOWN SUPPORT WALL AT 40 FEET PER MINUTE.
 7. GUIDE RAIL SUPPORT WALL CANNOT EXCEED 1/8" OF TOTAL DEFLECTION AT POINT OF SUPPORT. (PER ASME A17.1 2.23.5.2)

(BUFFER SPRINGS ARE PROVIDED WHEN PIT DEPTH IS 15" OR GREATER)
BUFFER SPRING LOCATION

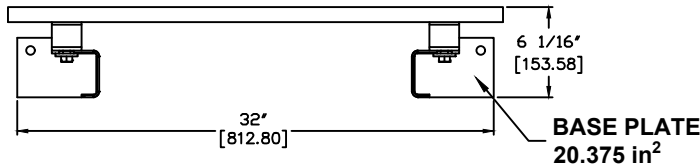


Impact Load Per Spring (Per ASME A17.1 8.2.3.2)	
1/2 Weight of Dead and Live Load	1080.5 lbs
Maximum Stroke of Buffer Spring	2.71 in
Impact	2264 lbs

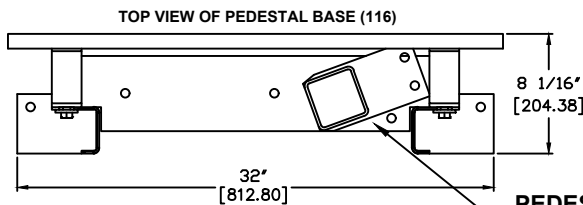
NOTE:
 ALL DIMENSIONS ARE IN INCHES.
 DIMENSIONS IN [] ARE MM.



TOP VIEW OF RAIL (115 & 118)



BASE PLATE
 20.375 in²



PEDESTAL BASE
 114 in²

FOX VALLEY ELEVATOR

1726 North Ballard Road
 Appleton, WI 54911
 Phone: 800-238-8739

ELEVATOR CONTRACTOR:

JOB NAME: ORDER NUMBER:

PACA-SERIES RAIL AND PIT FLOOR REACTIONS

DRAWN BY: DATE: SIGNATURE OF APPROVAL DWG. NO. C-003070