

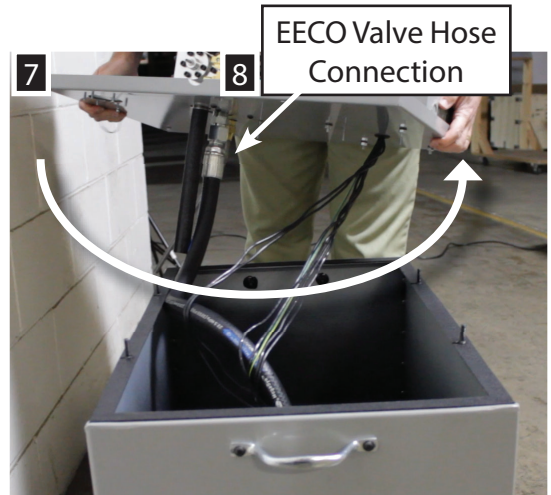
INSTALLING A FLOW CONTROL VALVE IN AN EECO PUMP



SERIES : 114, 116

ATTENTION!!! Do not allow the hydraulic oil to become contaminated with foreign debris by maintaining a clean work environment.

1. Pit or post the elevator car.
2. Turn "OFF" power and depressurize the system.
3. Disconnect plumbing between jack and control valve/tank so the tank can be moved.
4. Remove dip stick and/or tank cover to remove oil from the tank as needed to expose the pump mounting bolts.
5. Verify all electrical wiring to tank has slack or is disconnected.
6. Verify there is clearance around the tank and/or move the tank.

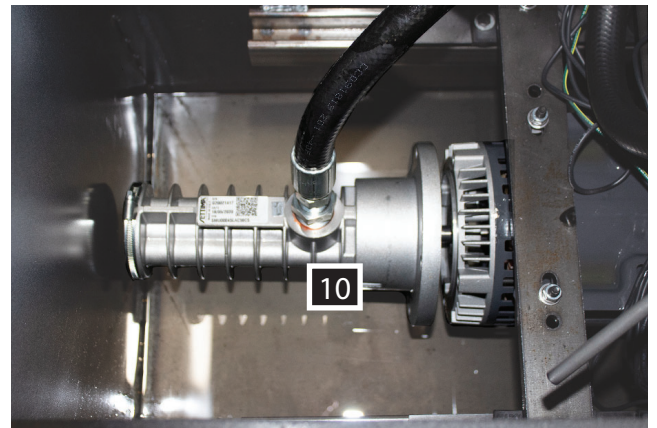


7. Lift the cover up, (may be tight because of seal) and twist the cover ~270° to unwind the hose and set the cover on the end of the tank verifying its well balanced.

Note: Be careful with all the components and wiring that will be hanging from the bottom of the cover.

8. Remove the hose from the bottom of the main EECO control valve.
9. Reach down into the tank and remove the pump mounting hardware.

Note: Be careful not to drop any hardware into the tank.



10. Carefully separate the pump from the motor.

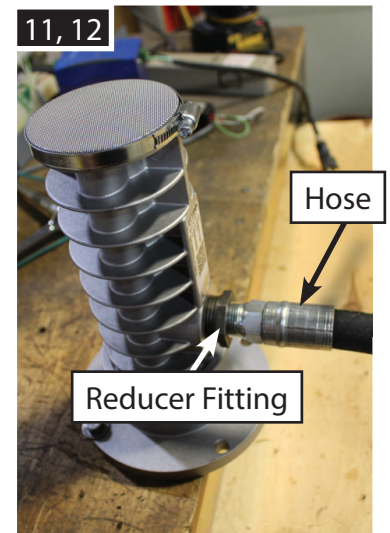
Note: Be careful not to lose the key.

11. Secure the pump to a clean work surface.

CAUTION! Pump will contain oil.

12. Remove the hose from the reducer fitting in the pump.

Note: DO NOT remove the reducer fitting from the pump.



INSTALLING A FLOW CONTROL VALVE IN AN EECO PUMP

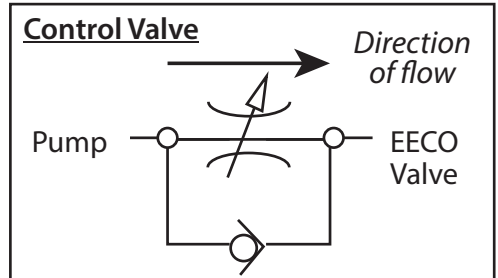


SERIES : 114, 116

ATTENTION!!! Do not allow the hydraulic oil to become contaminated with foreign debris by maintaining a clean work environment.

13. Arrange plumbing by assembling (in order): 2-1/2" long nipple, 90° street elbow, flow control valve, and the 2nd 90° street elbow (see image below)
14. Install plumbing assembly into the reducer fitting of the pump while on the work surface.
15. Re-install the pump to the motor with the previously removed hardware. (Pay attention to the key orientation)
16. Attach the ridged hose end to the 2nd street elbow and reattach swivel hose end to Main EECO control valve.
17. Verify that the hose is laid out in acceptable manner when the lid is placed on top of the tank.
18. If the tank was moved, return it back to its original location and reconnect all removed wiring and plumbing.
19. Adjust the flow knob on the valve to max open by turning CCW.
20. Refill the tank with oil, up to the bottom of the newly added control valve. Allowing you to make flow control adjustments without getting oily. Turn "ON" power and remove the post.

Note: Only make adjustments when the elevator is idle.



21. Fully load the elevator car, run the unit up and use a tachometer to get elevator car speed.

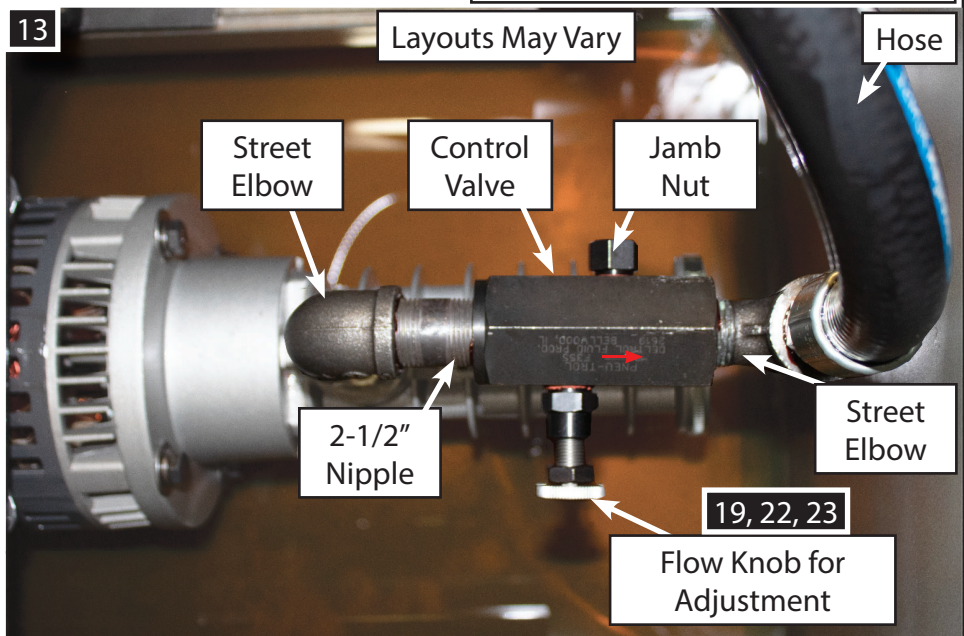
22. Turn flow control valve knob CW to reduce elevator car speed.

23. Adjust to contract speed. Once you find the desired speed setting tighten the jamb nut to hold the setting in position.

Note: The elevator car must be fully loaded during flow adjustment, because the flow control valve is not pressure compensated and only will effect the "UP" Contract Speed".

24. Refill the tank with the remainder of oil and secure any items that are not installed. Run as normal.

25. Make all other adjustments on the main EECO control valve.



PTM30257-B

1726 North Ballard Road; Suite 1 - Appleton, WI 54911 - 920-991-9082

08 MAY 2023

Technical Support 855-804-5774 - parts@foxvalleyelevator.com