

An elevator modernization (MOD) will update critical components of the elevator. It will include a new powerhead (the machine), controls, some or all of the control wiring, sheaves, cables, safety, and new door interlocks.

### The advantages of purchasing a MOD package are:

- A new 18-month warranty on package parts from ship date.
- The new powerhead consisting of a sealed gearbox and high efficiency motor.
- PLC controls with VFD gives a wide range of new options of functionality and safety per current codes.
- A new landing package that provides a smooth start and stop from each floor landing.

### Optional new safety items:

- Space Guards
- Battery Descent

### Optional items to provide a new look:

- Hall Stations
- COP's
- New Car and Gate
- Position Indicators

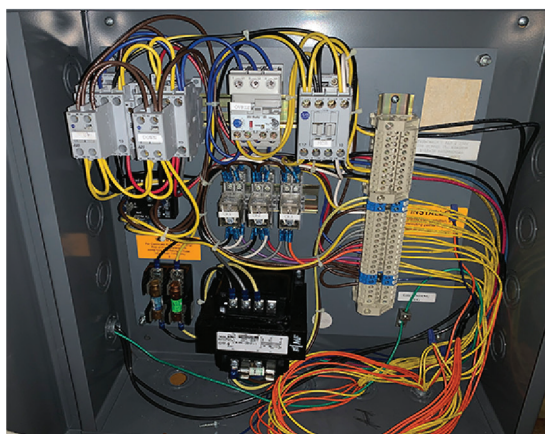
Old Powerhead Example



New MOD Powerhead Example



Old Relay Logic Controller Example



New Controller Example



Fox Valley Elevator 500# elevator modernization package will bring peace of mind and the freedom to access all levels of your home, without worry, for years to come.

**Contact your local authorized Fox Valley Elevator Dealer for a Quote!**